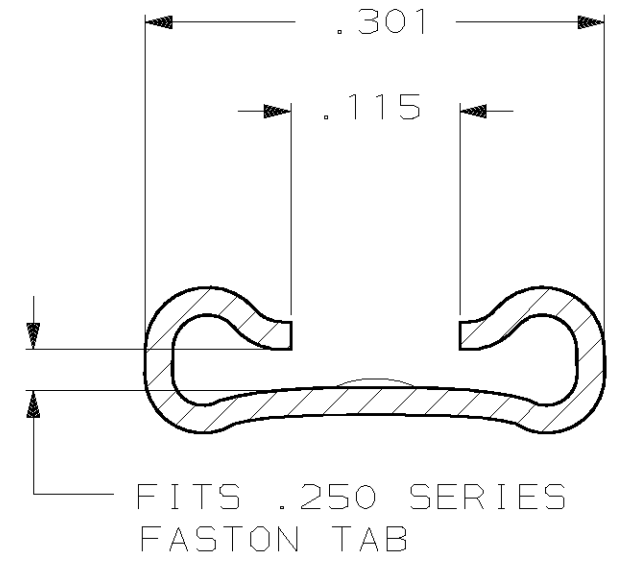
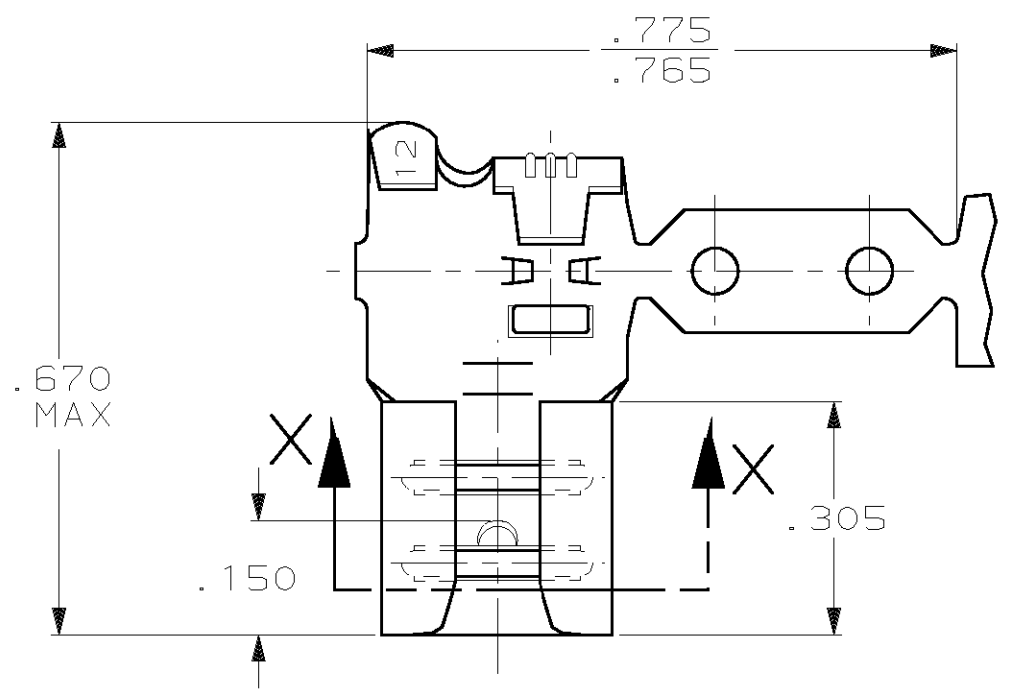


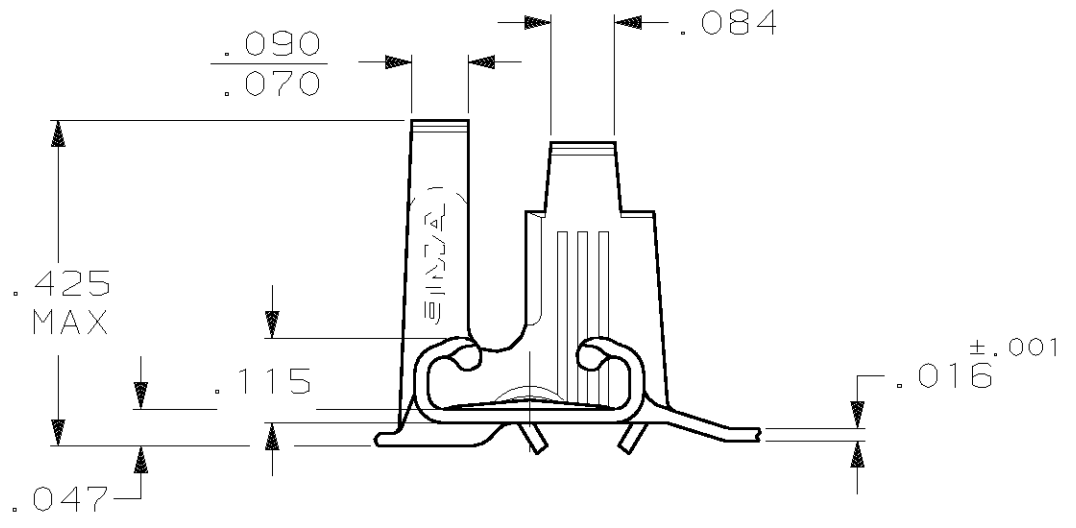
THIS DRAWING IS UNPUBLISHED. RELEASED FOR PUBLICATION ,19 .
 © COPYRIGHT 19 BY AMP INCORPORATED. ALL INTERNATIONAL RIGHTS RESERVED.

LOC	DIST	P	F	REVISIONS				
AF	50			ZONE	LTR	DESCRIPTION	DATE	APPD
					P	ADDED -5 PER OG3A-0602-00	08SEP00	JR/PD



SECTION X-X
SCALE 8:1

- 1 CONTINUOUS STRIP ON REELS.
- 2 FOREIGN PRODUCTION ONLY.
- 3 TIN PLATE .000080 MIN THK.
- 4 MATING TAB THK IS .032±.001.
- 5 WIRE SIZE IS #18-#12 AWG
- 6 INSULATION RANGE IS .110-.210 DIA.
- 7 PRELIMINARY - NOT FOR PRODUCTION



.000150 MIN NICKEL	T2 STEEL	△ 42742-5
PRE-TIN	4M BRASS	△ 42742-3
TIN △	4M BRASS	42742-2
-	4M BRASS	42742-1
FINISH	MATERIAL	PART NO

DO NOT SCALE PRINT. UNLESS SPECIFIED DIMENSIONS ARE IN INCHES TOLERANCES ON: 2 PLC DEC ± - 3 PLC DEC ± .015 ANGLES ± -	DR 1/23/91 JR RUTH	AMP AMP Incorporated Harrisburg, PA 17105-3608
	CHK 1/24/93 MS FEHER	
	APPD 1/24/93 J GILLESPIE	
	APPD 1/24/93 D REINER	
MATERIAL 4M BRASS	PRODUCT SPEC -	NAME RECEPTACLE, FASTON™ FLAG, .250 SERIES
FINISH SEE TABLE	APPLICATION SPEC -	SIZE B
	WEIGHT -	CAGE CODE 00779
		DRAWING NO 42742
		SCALE 4:1
		SHEET 1 OF 1